

UniCel DxC 600/800 Daily Start Up



For Training Purposes Only

These job aids are shortened versions of procedures found in the reference below. Information in the job aid is correct as of the date published. Verify you have the correct information.

References:

- UniCel® DxC Synchron Systems Instructions for Use PN A93719AB (October 2012)

UniCel DxC 600/800 Synchron Clinical Systems

WARNINGS AND PRECAUTIONS

Read all product manuals and consult with Beckman Coulter-trained personnel before attempting to operate the instrument.

Beckman Coulter, Inc. urges its customers and employees to comply with all national health and safety standards such as the use of barrier protection. This may include, but is not limited to, protective eyewear, gloves, suitable laboratory attire when operating or maintaining this or any other automated laboratory equipment.

INTENTION FOR USE

This document is not intended to replace the information in your Instrument Instructions for Use Manual (IFU). Information in the Instructions for Use Manual supersedes information in any other manual.

REVISION STATUS

Rev. F (September 2013)
Based on DxC software version 5.3 (or higher)

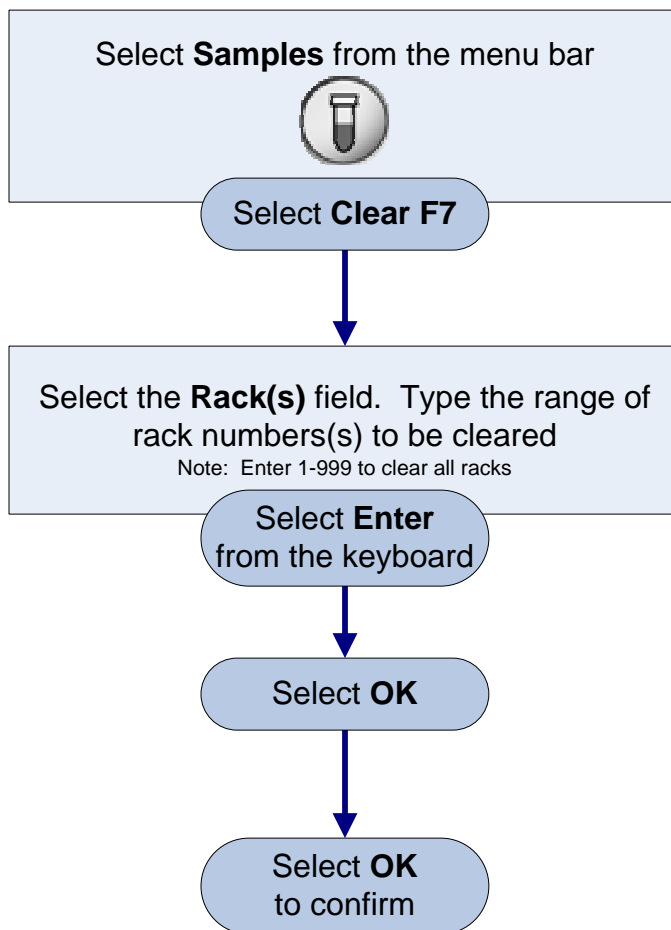
TRADEMARKS

Beckman Coulter, the stylized logo, Access, Microtube, Synchron, and UniCel are trademarks of Beckman Coulter, Inc., and are registered with the USPTO. All other trademarks are the property of their respective owners.

DxC Daily Start Up

Flowcharts	Page
Clear Manually Assigned Racks	5
Check Reagent Status	6
Load MC Reagents	7
Load CC Reagents	8
Unload CC Reagents	9
Check Calibration Status	10
Calibrate	11
Process Quality Control using Auto Generation of Control	12
Manually Program/Process Quality Control	13
Sample Processing	14
Low Volume Sample Processing	15

Clear Manually Assigned Racks



- Clearing Racks does not clear programming for Sample ID's; it only clears the assignment to a rack/position. Your Closed Tube Tracking Database tracks which samples have been pierced by Sample ID.
- You may get a message informing you that some racks are In-Progress, Removed, Requested for calibration, or Reserved for Cal. This feature protects you from inadvertently clearing a rack that is needed for one of these conditions.

Check Reagent Status

Select **Rgts/Cal** from the menu bar

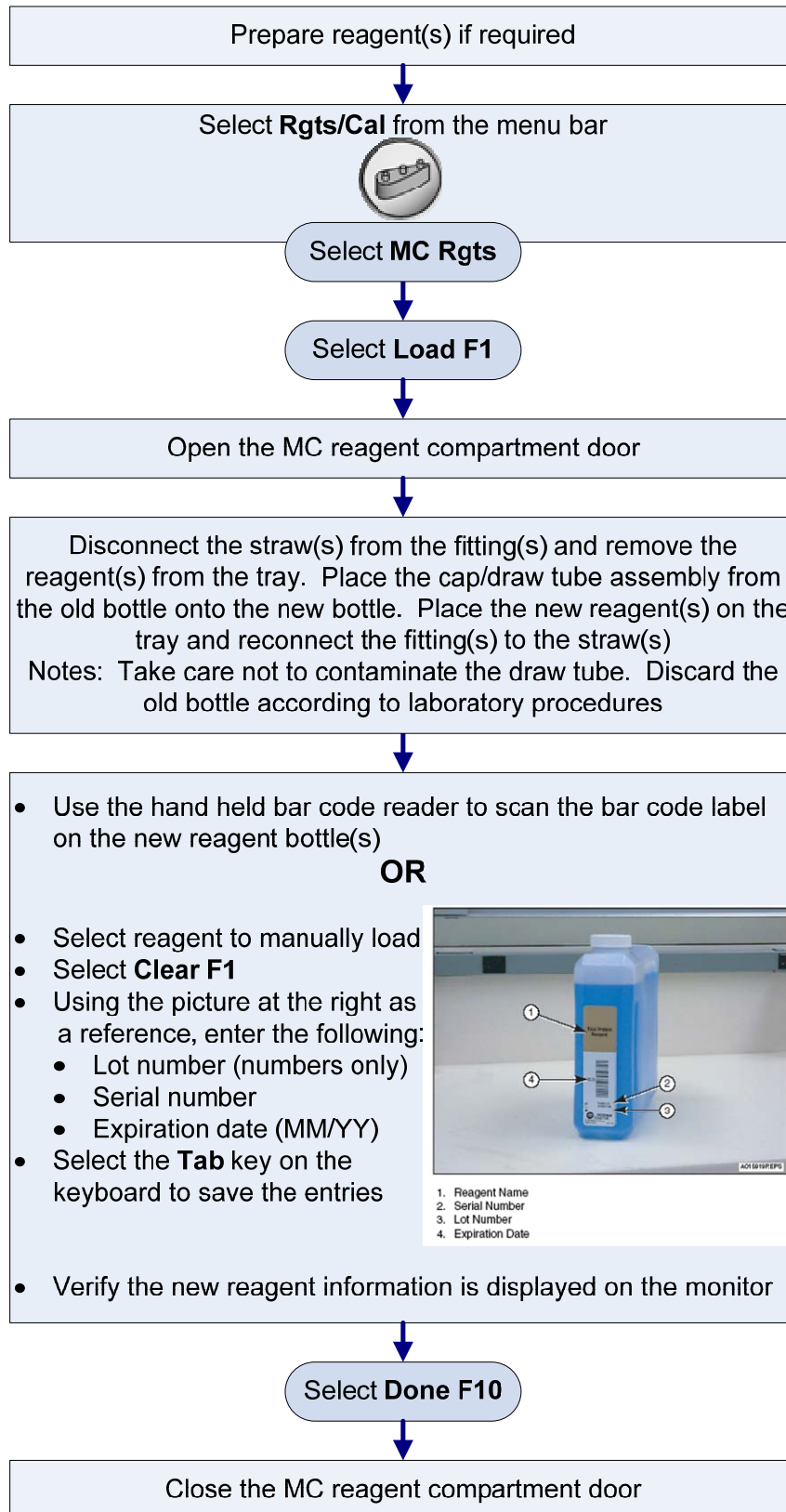


Select **Print F10**

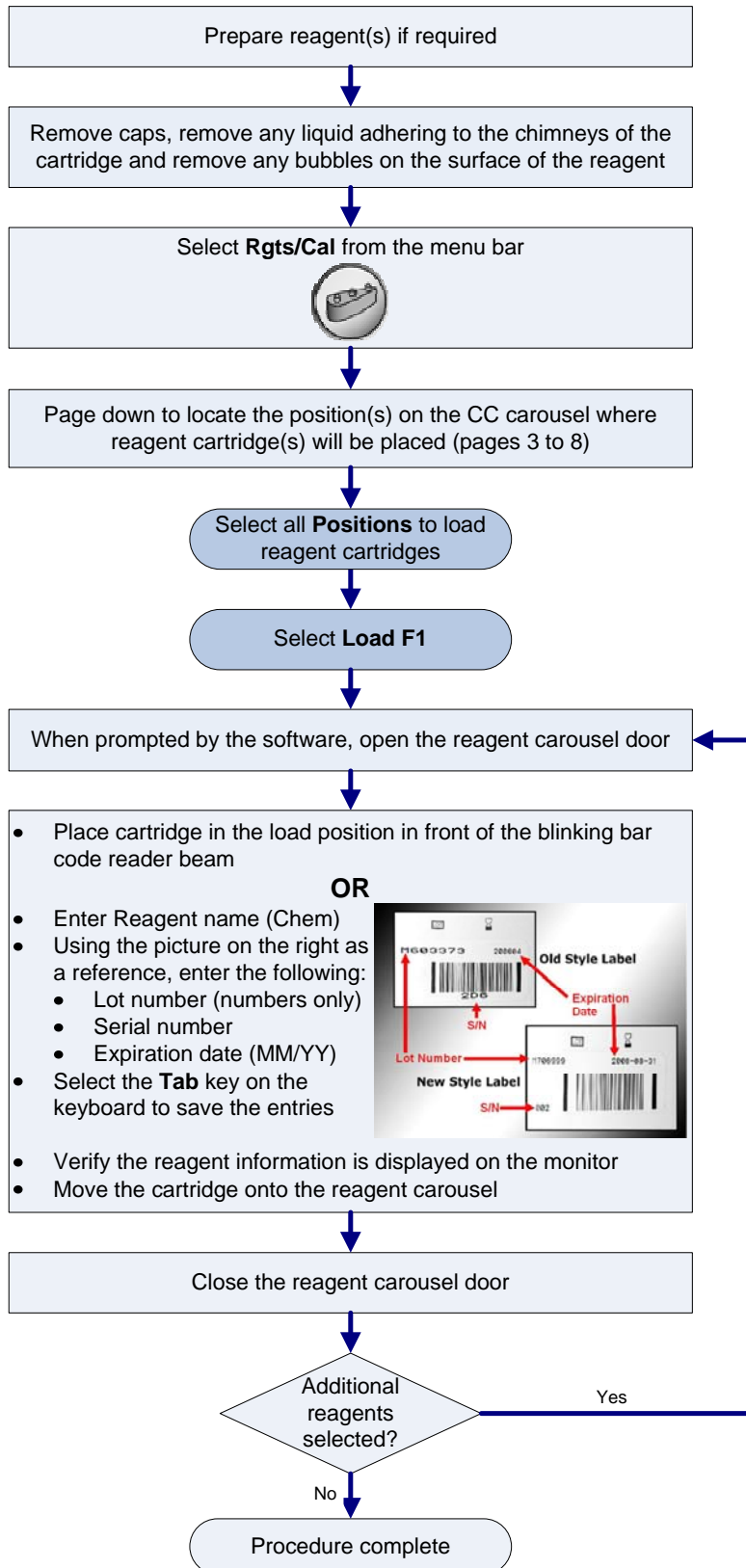
Note: Reagent status can also be viewed on the software

Review the *Vol (%)*/*Tests Left*, *Days Left*, and *Reagent Status* columns for reagent requirements

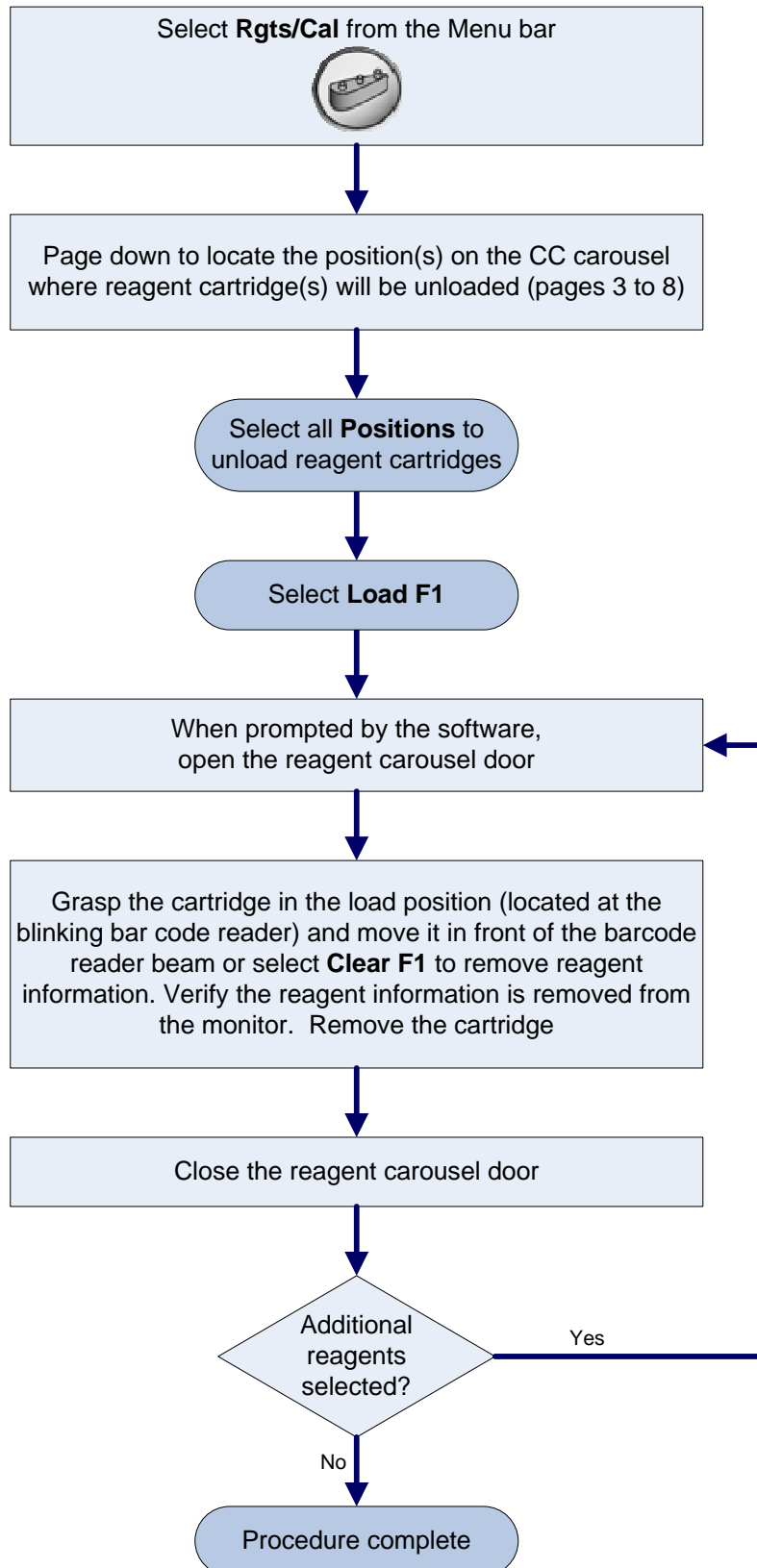
Load MC Reagents



Load CC Reagents



Unload CC Reagents



Check Calibration Status

Select **Rgts/Cal** from the menu bar

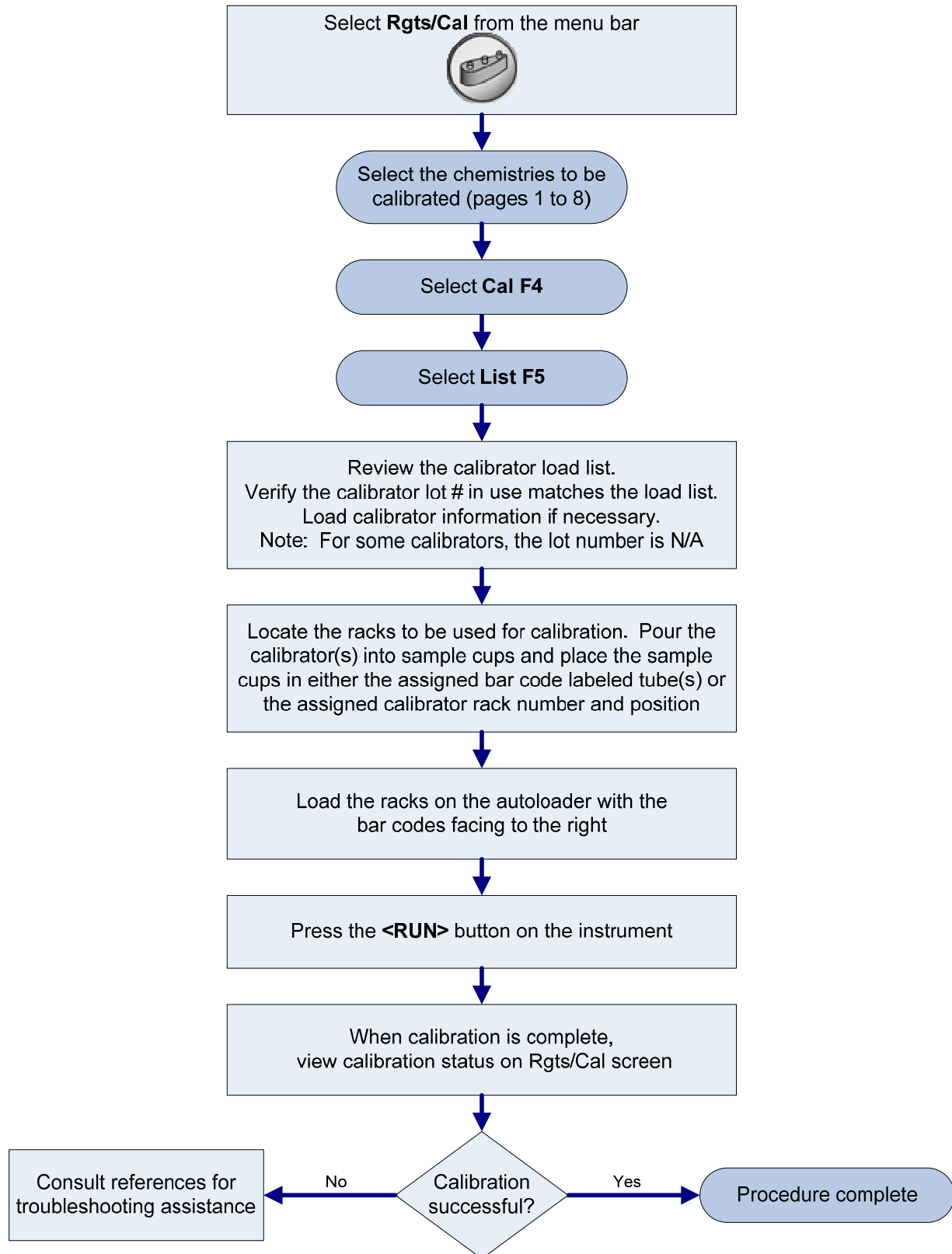


Select **Print F10**

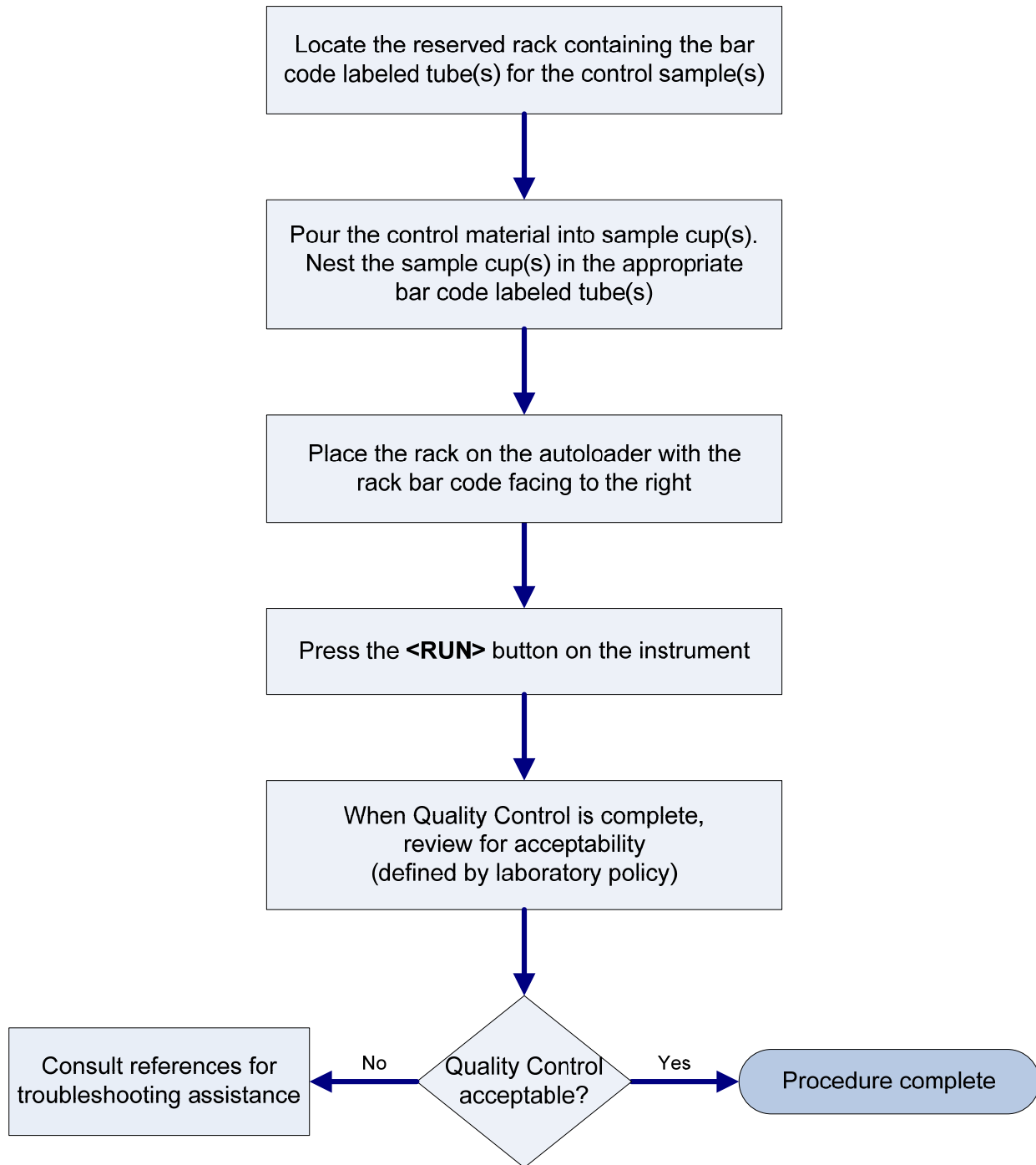
Note: Calibration status can also be viewed on the software

Review the *Cal Time Left* and *Cal Status* columns to identify reagents requiring calibration

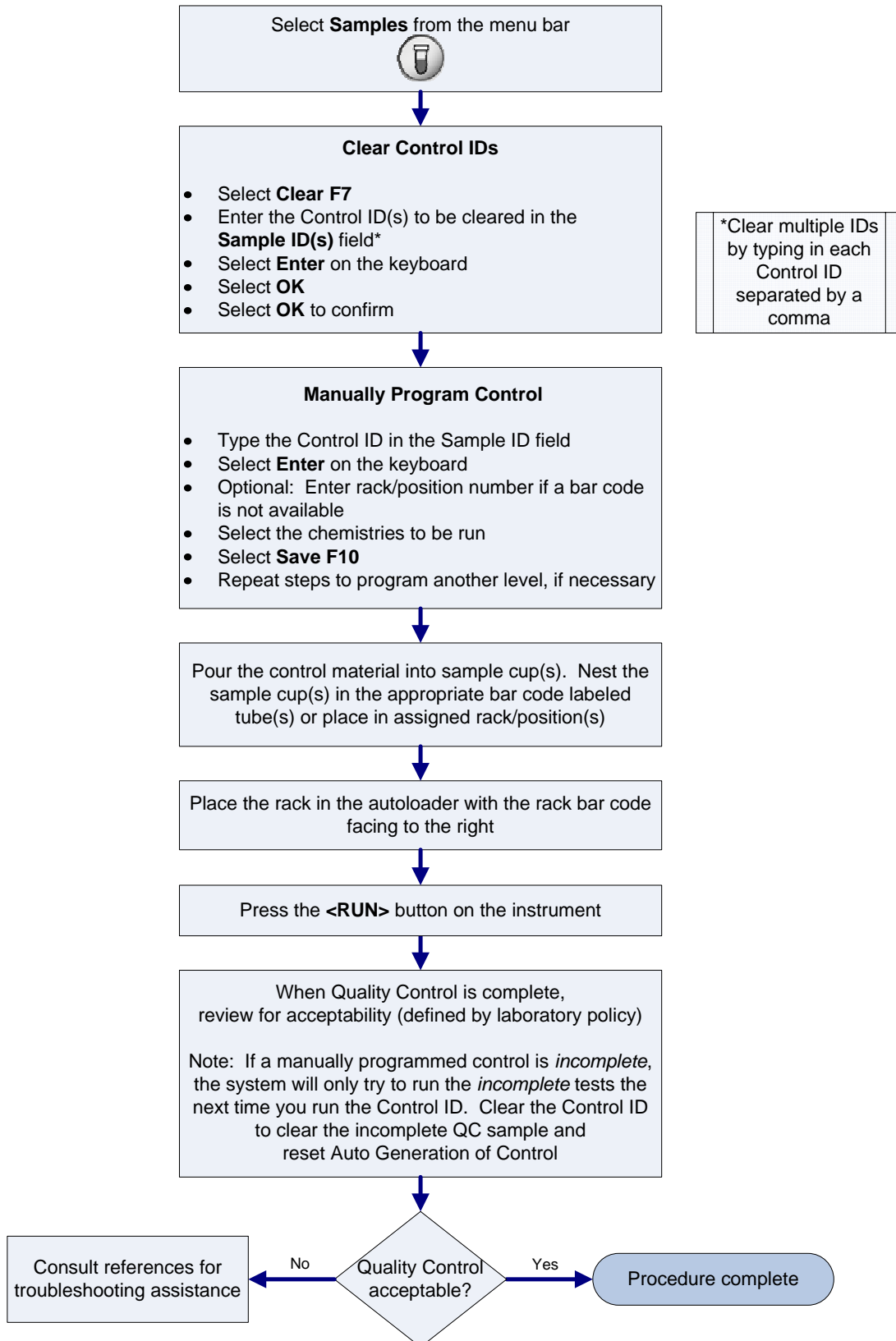
Calibrate



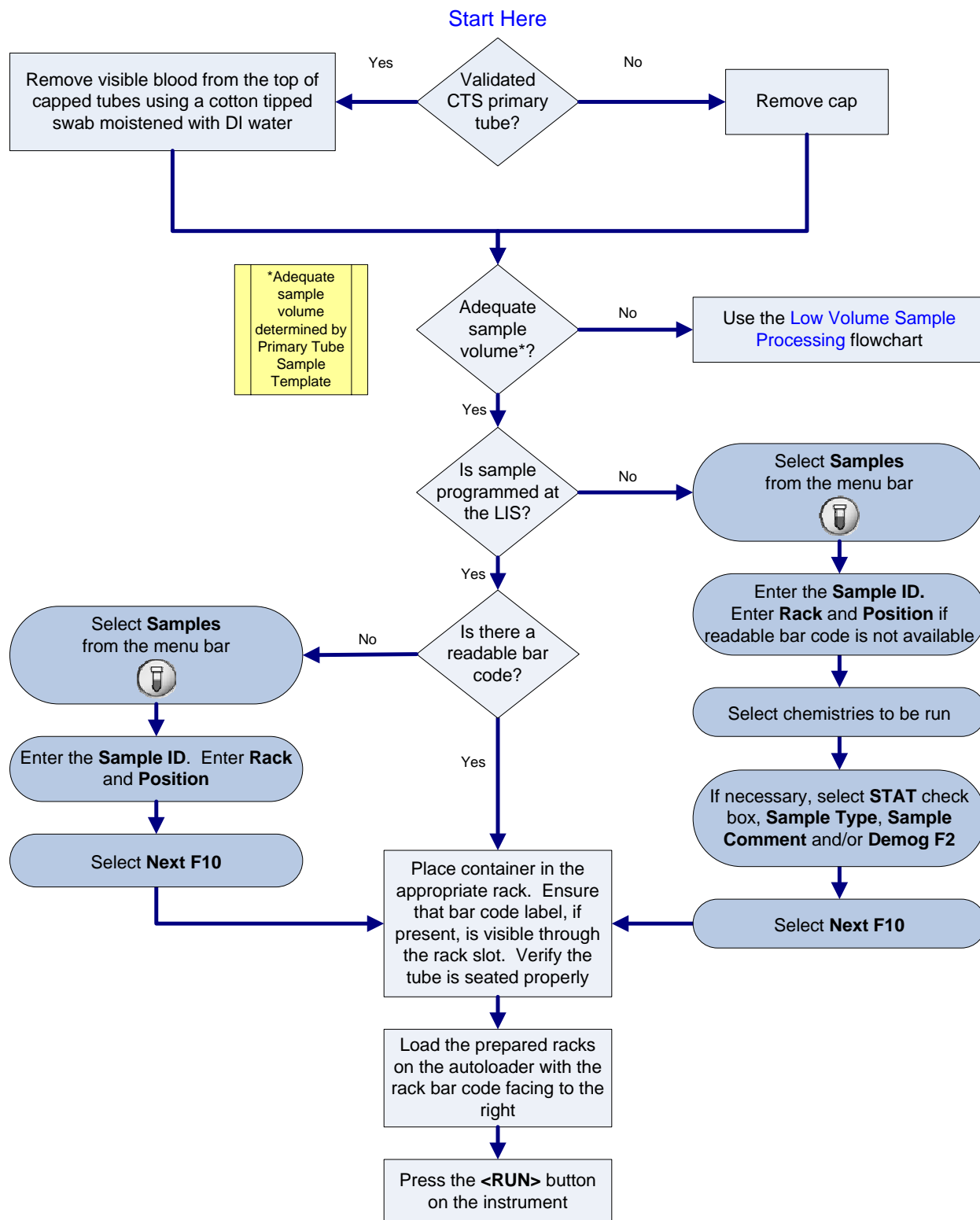
Process Quality Control using Auto Generation of Control



Manually Program/Process Quality Control



Sample Processing



Low Volume Sample Processing

